



GAT MONTHLY MEMBERSHIP PROGRESS REPORT

Results as of: 11/30/2020

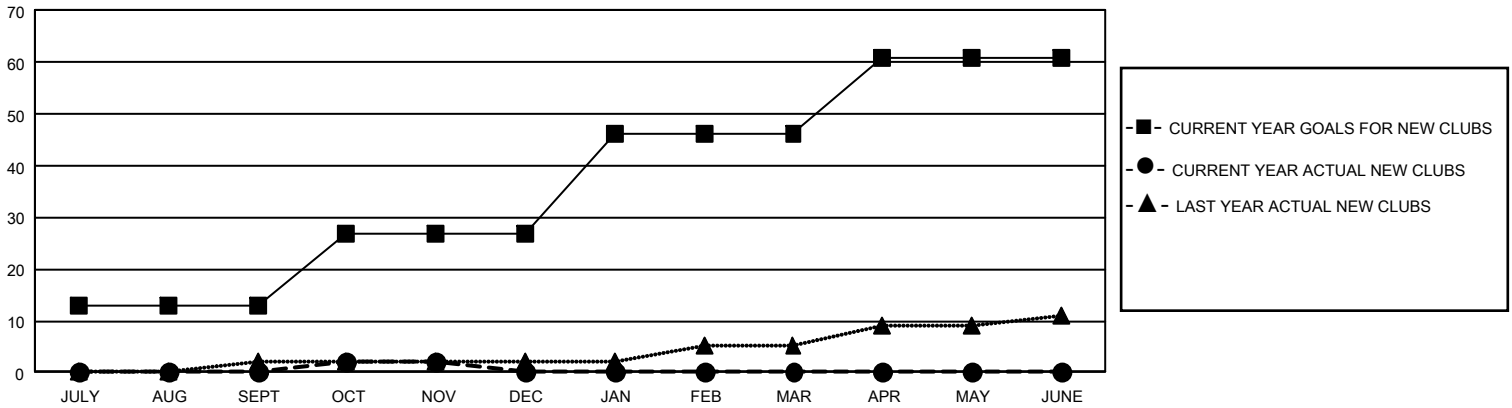
GAT Constitutional Area 5 - Japan

REPORT DOES NOT INCLUDE CLUBS IN UNDISTRICTED AREAS.

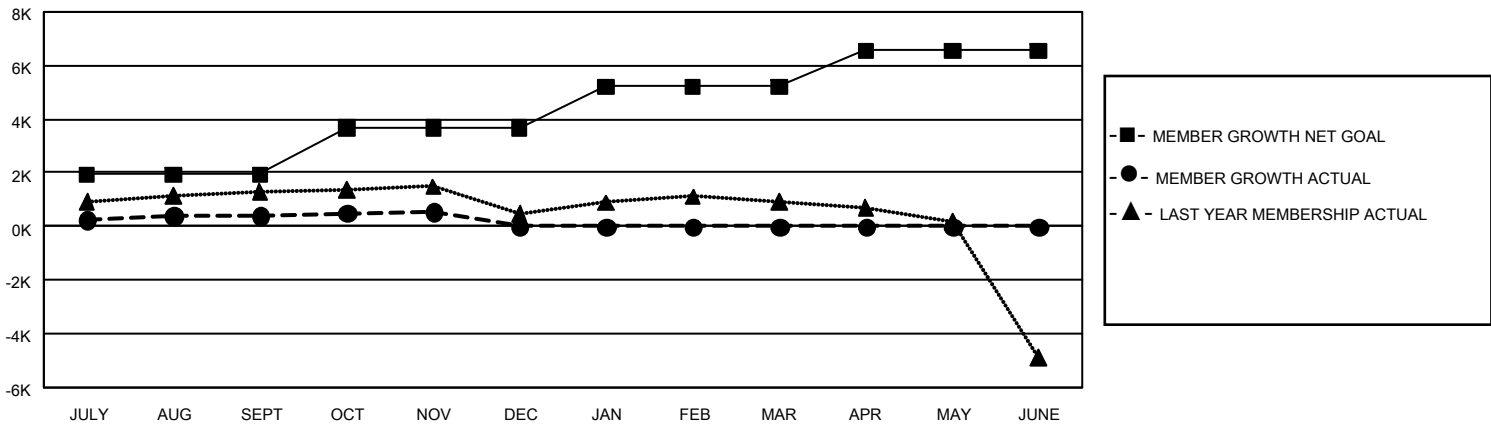
Clubs			
RESULTS FOR 2020-2021			
QUARTER	NEW CLUB GOAL	NEW CLUBS	DROPPED CLUBS
JULY/AUG/SEPT	39	0	5
OCT/NOV/DEC	42	2	3
JAN/FEB/MAR	57	0	0
APR/MAY/JUNE	45	0	0

Members			
RESULTS FOR 2020-2021			
QUARTER	MEMBER GROWTH NET GOAL	MEMBER GROWTH ACTUAL	DROPPED MEMBERS ACTUAL (including transfers)
JULY/AUG/SEPT	1924	2,283	1,798
OCT/NOV/DEC	1746	951	764
JAN/FEB/MAR	1548	0	0
APR/MAY/JUNE	1337	0	0

GOALS AND ACTUAL NEW CLUBS CUMULATIVE



GOALS AND ACTUAL MEMBERS CUMULATIVE



DROPPED CLUBS: 8	1,389 CLUBS OF 2,910 ADDED 1 OR MORE NEW MEMBERS	<u>GENDER DISTRIBUTION</u>	
<u>DROPPED MEMBERS</u>		MALE	81,225 (76.16%)
DECEASED	334	FEMALE	25,429 (23.84%)
CLUB CANCELLED	23	TOTAL FAMILY UNIT MEMBERS 38,403	
OTHER	2,204	FAMILY MEMBERS PAYING HALF DUES 21,133	
TOTAL	2,561		

[CLICK HERE FOR CUMULATIVE MEMBERSHIP DATA](#)